

RAPID

Windsor

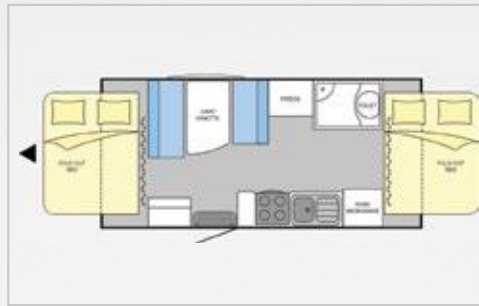


RAL456



| | |
|---------------------------------|--------|
| Body Length (mm) | 4,510 |
| Overall Length (mm) | 6,160 |
| Overall Height – Roof up (mm) | 2,750 |
| Overall Height – Roof down (mm) | 2,150 |
| Overall Body Width (mm) | 2,480 |
| Tare Weight (kg) | 1,400* |
| ATM Weight (kg) | 1,800* |

RAL501S



| | |
|---------------------------------|--------|
| Body Length (mm) | 5,010 |
| Overall Length (mm) | 6,660 |
| Overall Height – Roof up (mm) | 2,750 |
| Overall Height – Roof down (mm) | 2,150 |
| Overall Body Width (mm) | 2,480 |
| Tare Weight (kg) | 1,590* |
| ATM Weight (kg) | 1,990* |

RAL549



| | |
|---------------------------------|--------|
| Body Length (mm) | 5,420 |
| Overall Length (mm) | 7,060 |
| Overall Height – Roof up (mm) | 2,750 |
| Overall Height – Roof down (mm) | 2,150 |
| Overall Body Width (mm) | 2,480 |
| Tare Weight (kg) | 1,650* |
| ATM Weight (kg) | 2,050* |

RAL563S



| | |
|---------------------------------|--------|
| Body Length (mm) | 5,620 |
| Overall Length (mm) | 7,260 |
| Overall Height – Roof up (mm) | 2,750 |
| Overall Height – Roof down (mm) | 2,150 |
| Overall Body Width (mm) | 2,480 |
| Tare Weight (kg) | 1,800* |
| ATM Weight (kg) | 2,200* |

**Note: Weights and specifications shown are indicative and are meant as a guide only. Weights may vary between builds and will change when adding options. Due to progressive product improvements all specifications are subject to change without notice. Images are not to scale and are only for illustration purposes.*



COROMALWINDSOR.COM.AU



RAPID SPECIFICATIONS

CHASSIS

Welded DuraGal Steel
Coupling fixed 3500kg
Ezy-Tow Tourer Independent Suspension
15" Tyres with alloy wheels plus spare steel wheel
Spare wheel mount on rear bumper
Gas bottle mount on A-frame
8" Jockey wheel with quick release jack legs
Step - recessed
Water tank guard

APPLIANCES

Airconditioner
Stove with grill (1 electric / 3 gas burners)
Microwave 25L
Radio / CD / DVD / USB / Bluetooth Colour touch screen
Internal speakers x2
12V Rangehood with twin lights

POWER & ELECTRICS

External 240V power outlet
External TV antenna inlet
Prewired solar wire provision
12V mains light over-ride switch
Prewired reversing camera provision
USB Point - TV area
Annex light
Reading lights to bedroom
Battery provision

GAS

Gas bottles 4kg x2
Double regulator

SAFETY

Electronic brakes
Non-slip ABS recessed entry step
Entry handle with light

CONSTRUCTION

Future Teck™ Walls
Front boot
Front stone guard
Push out Viento windows
Roll-out awning
Flyscren and blackout blinds

KITCHEN & PLUMBING

Kitchen sink - stainless steel bowl and drainer
Kitchen tap - swivel mixer
Kitchen splashback 200mm
Water gauge
Lockable water filler
Mains water tap to A-frame
Mains water inlet
12V water pump
Moulded cutlery tray
Laminated plywood benchtops
Flush gloss kitchen cabinets with soft close drawers
Dinette drawer/s
Dinette - "V" Leg drop-down table

BEDROOM

Luxury foam mattress

MODEL SPECIFIC STANDARDS

| | |
|--|---------------------------|
| Child safety restraints to bunk beds | RAL549 |
| Ceiling hatch with fan | RAL501S RAL563S |
| USB sockets and reading lights to bunks | RAL549 |
| 90L AES 3-Way Fridge (12V / 240V / Gas) | RAL456 RAL501S RAL549 |
| 150L AES 3-Way Fridge (12V / 240V / Gas) | RAL563S |
| Hot Water System (Gas/ 240V) | RAL501S RAL563S |
| Vanity sink - flush mount corner | RAL501S RAL563S |
| Ensuite tap - short mixer | RAL501S RAL563S |
| Water tank 1x 80L | RAK456 RAL549 |
| Water tank 2x 80L | RAL501S RAL563S |
| Foam mattresses to bunks | RAL549 |
| Shower - toilet combo with exhaust fan and cassette toilet | RAL501S RAL563S |

**Note: Appliances may vary depending on availability. Not all items may be listed in this publication. Specifications are subject to change due to progress product improvements.*