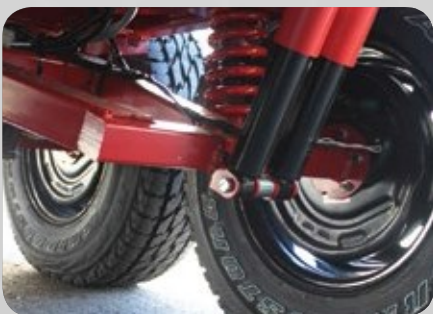


COROMAL

PIONEER XC

PXC552s' | PXC553s' | PXC612s' | PXC632s
PXC636s' | PXC661s' | PXC662s' | PXC696s





The Coromal Pioneer XC is designed as a robust off-roader for avid adventurers who love exploring the Australian Outback.

Built on a hot-dipped galvanised chassis, the Coromal Pioneer XC is designed for rugged outback adventures, with an off-road coupling and 16 inch steel wheels. The A-frame holds a large storage facility for the storage of two 9kg gas bottles and the provision of jerry cans. The mains tap on the chassis is useful to wash down dirt from the day's adventure.

The Trailing Arm suspension provides a predictable and easy towing system using a coil and shock mechanism which reduces bounce and eliminates sideways suspension movement.

The kitchen is packed with standard features including a built-in 190L 3-way fridge, microwave, stove with grill and 12V recessed range hood. The stainless steel bowl with drainer come with a standard kitchen mixer tap.

With standard built-in modern cabinetry for maximum storage space, the Pioneer XC includes 25mm benchtops, soft-close drawers and cupboards.

The upholstered dinette provides a comfortable zone for meals or watching TV in the comfort of air conditioning. Two convenient roof hatches provide optimum airflow. The large windows allow for plenty of natural light with the

inclusion of fly screens and block-out blinds for privacy. LED lighting is also provided throughout the van providing a modern touch.

Each of the bedroom configurations come with side tables, reading lights and a memory foam mattress with convenient storage space under the bed.

All models come standard with a shower, hot water system and toilet, providing practical and enjoyable space solutions. Most models also include a washing machine.

Other features include a retractable awning, annex lights, external power outlet and TV point. Two solar panels provide adequate power to run all 12V appliances, including the built-in sound system with radio, CD, DVD and USB connectivity. The Pioneer XC range also has a pre-wired reverse camera provision.

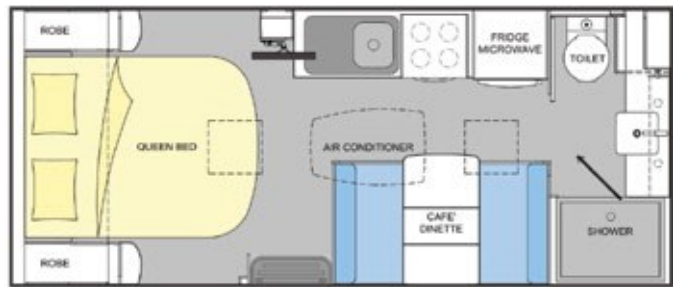
The water gauge allows you to check the water tank levels before setting off, very useful when you need to carry drinking water on your trip.

Standard safety features on all models include the stability ESC breaking system, smoke detector, fire extinguisher and non-slip recessed entry step with entry light and easy grip entry handle. ■

PIONEER XC FLOOR PLANS

Pioneer XC PXC552s

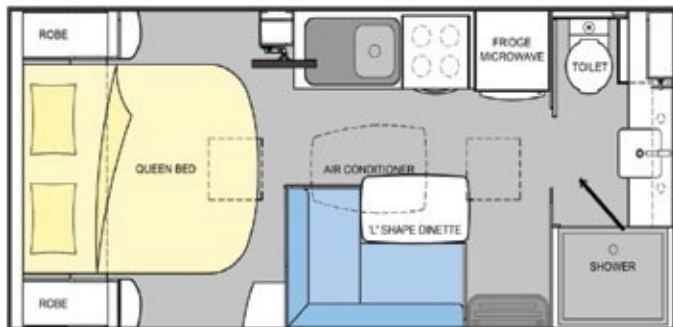
| | |
|--------------------------------|--------|
| Body Length (mm) | 5,500 |
| Overall Length (mm) | 7,565 |
| Overall Height – Standard (mm) | 3,050 |
| Interior Height (mm) | 1,980 |
| Overall Body Width (mm) | 2,480 |
| Tare Weight (kg) | 2,350* |
| ATM Weight (kg) | 2,750* |



Alternative layout option: L shape dinette. Single bed option available

Pioneer XC PXC553s

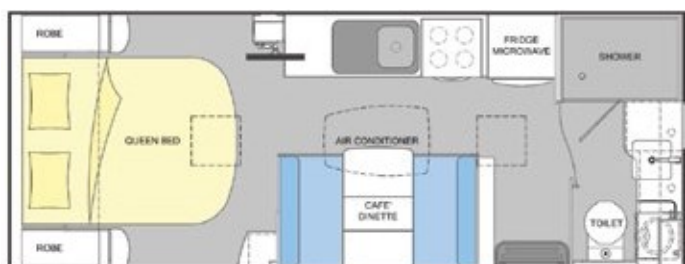
| | |
|--------------------------------|--------|
| Body Length (mm) | 5,500 |
| Overall Length (mm) | 7,565 |
| Overall Height – Standard (mm) | 3,050 |
| Interior Height (mm) | 1,980 |
| Overall Body Width (mm) | 2,480 |
| Tare Weight (kg) | 2,290* |
| ATM Weight (kg) | 2,690* |



Alternative layout option: Single bed option available

Pioneer XC PXC612s

| | |
|--------------------------------|--------|
| Body Length (mm) | 6,150 |
| Overall Length (mm) | 8,250 |
| Overall Height – Standard (mm) | 3,050 |
| Interior Height (mm) | 1,980 |
| Overall Body Width (mm) | 2,480 |
| Tare Weight (kg) | 2,790* |
| ATM Weight (kg) | 3,390* |



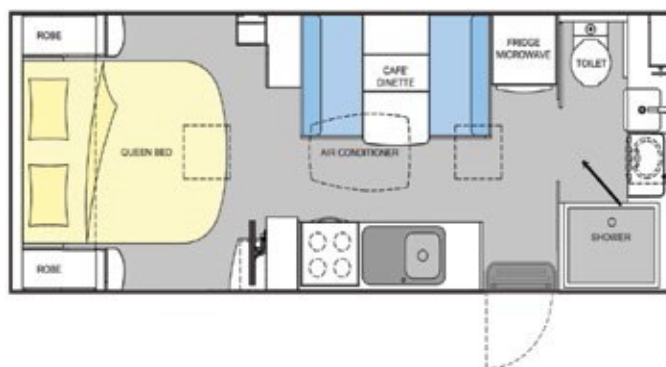
Alternative layout option: L shape dinette. Single bed option available





Pioneer XC PXC632s

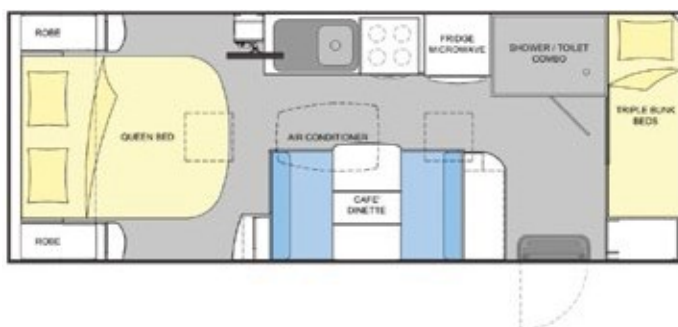
| | |
|--------------------------------|--------|
| Body Length (mm) | 6,300 |
| Overall Length (mm) | 8,425 |
| Overall Height – Standard (mm) | 3,050 |
| Interior Height (mm) | 1,980 |
| Overall Body Width (mm) | 2,480 |
| Tare Weight (kg) | 2,770* |
| ATM Weight (kg) | 3,370* |



Alternative layout option: L shape dinette. Single bed option available

Pioneer XC PXC636s Family

| | |
|--------------------------------|--------|
| Body Length (mm) | 6,300 |
| Overall Length (mm) | 8,425 |
| Overall Height – Standard (mm) | 3,050 |
| Interior Height (mm) | 1,980 |
| Overall Body Width (mm) | 2,480 |
| Tare Weight (kg) | 2,780* |
| ATM Weight (kg) | 3,380* |



Alternative layout option: L shape dinette. Single bed option available. Optional double bunks



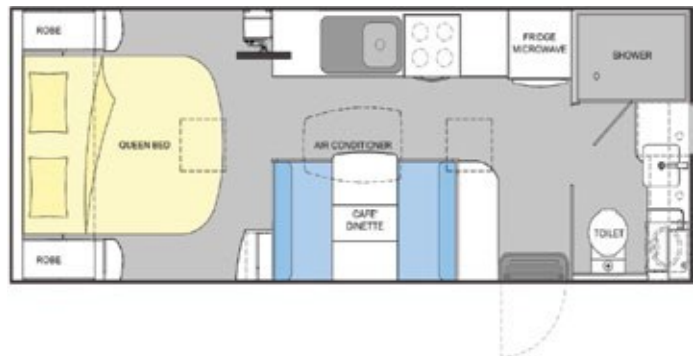
Pioneer XC PXC661s

| | |
|--------------------------------|--------|
| Body Length (mm) | 6,600 |
| Overall Length (mm) | 8,760 |
| Overall Height – Standard (mm) | 3,050 |
| Interior Height (mm) | 1,980 |
| Overall Body Width (mm) | 2,480 |
| Tare Weight (kg) | 2,960* |
| ATM Weight (kg) | 3,460* |



Pioneer XC PXC662s

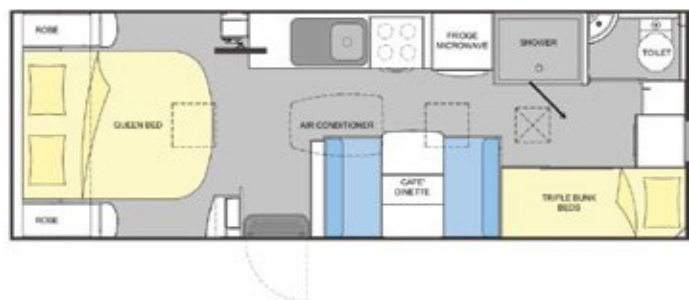
| | |
|--------------------------------|--------|
| Body Length (mm) | 6,600 |
| Overall Length (mm) | 8,760 |
| Overall Height – Standard (mm) | 3,050 |
| Interior Height (mm) | 1,980 |
| Overall Body Width (mm) | 2,480 |
| Tare Weight (kg) | 2,860* |
| ATM Weight (kg) | 3,360* |



Alternative layout option: L shape dinette. Single bed option available

Pioneer XC PXC696s Family

| | |
|--------------------------------|--------|
| Body Length (mm) | 6,900 |
| Overall Length (mm) | 9,010 |
| Overall Height – Standard (mm) | 3,050 |
| Interior Height (mm) | 1,980 |
| Overall Body Width (mm) | 2,480 |
| Tare Weight (kg) | 2,950* |
| ATM Weight (kg) | 3,450* |



Alternative layout option: L shape dinette. Single bed option available. Optional double bunks