

# COROMAL

## PRINCETON

P691s | P710s | P735s

**A caravan truly designed for royalty, the Coromal Princeton range offers luxurious space and comfort with contemporary styling. Packed with standard features, it offers all the pleasures to enjoy long and short trips from home.**

Built in Western Australia with Future Teck™ construction, the Coromal Princeton is truly a caravan first in its class.

The Princeton features an electronic slide-out which adds additional internal space when extended.

The additional living space allows for generous walkway areas around the club lounge dinette, queen size bed and the bathroom/laundry.

The Esy-Tow™ Tourer suspension provides a predictable and easy towing system, eliminating sideways and axle suspension movement for positive tracking.

Our Australian built welded chassis is coated with a corrosion resistant gal, and comes with 15 inch alloy wheels and quick-release jack legs. The A-frame holds two 9kg gas bottles and an outside mains water tap. All models come standard with an electric entry step.

The Princeton features a spacious kitchen with built-in modern cabinetry for maximum storage options including 25mm benchtops, soft-close drawers and cupboards, a 190L 3-way fridge, microwave, stove with oven and 12V recessed range hood. All Princeton models include a stainless steel bowl with a contemporary vegetable mixer tap.

LED lighting is provided throughout, along with reading lights in the bed area. With a luxuriously appointed queen-size electric posture adjustment bed, side tables and memory foam mattress, each model provides easy and convenient storage under the bed.

With a genuine leather club lounge as standard, the dinette provides a comfortable and convenient space for watching the TV that electronically slides to position for your viewing pleasure. The dinette allows for a 6 place meal setting when the slide out is extended.





The bathroom comes standard with a shower, hot water system and separate toilet, providing practical and enjoyable space solutions. All models also include a front load washing machine.

Large panoramic windows allow for plenty of natural light with the inclusion of fly screens and block-out blinds for privacy.

The air conditioner, combined with our Future Teck™ construction provides you with ambient air temperatures within the van, along with built-in ceiling hatches to address condensation.

The Coromal Princeton has an external slide-out kitchen, picnic table and entertainment system which allows for total enjoyment either inside or out.

Each Princeton model includes RV WiFi capabilities as standard, keeping you connected on the go.

The built-in sound system has radio, CD, DVD and USB connectivity, providing sound through internal and external speakers.

The water gauge allows you to check the water tank level before setting off, very useful when you need to carry drinking water on your trips. All Princeton models come with a built-in reversing camera as standard.

Standard safety features on all models include the stability ESC breaking system, smoke detector, fire extinguisher and non-slip recessed entry step with built-in lighting and easy grip entry handle. ■



# PRINCETON FLOOR PLANS

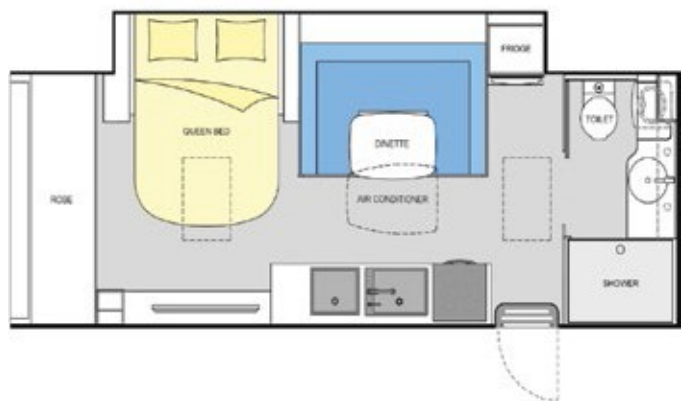
## Princeton P691s

Body Length (mm)	6,900
Overall Length (mm)	8,710
Overall Height – Standard (mm)	2,960
Interior Height (mm)	1,980
Overall Body Width (mm)	2,480
Tare Weight (kg)	2,670*
ATM Weight (kg)	3,170*



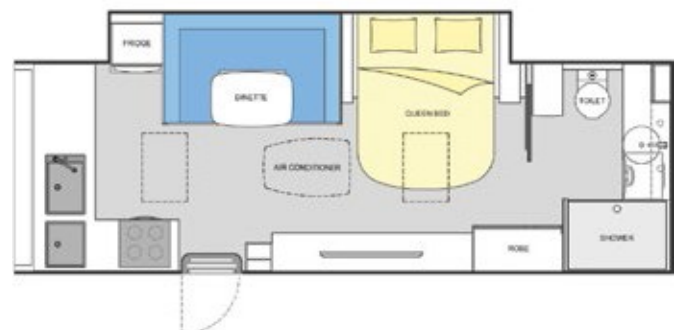
## Princeton P710s

Body Length (mm)	7,100
Overall Length (mm)	8,910
Overall Height – Standard (mm)	2,960
Interior Height (mm)	1,980
Overall Body Width (mm)	2,480
Tare Weight (kg)	2,750*
ATM Weight (kg)	3,250*



## Princeton P735s

Body Length (mm)	7,350
Overall Length (mm)	9,110
Overall Height – Standard (mm)	2,960
Interior Height (mm)	1,980
Overall Body Width (mm)	2,480
Tare Weight (kg)	2,830*
ATM Weight (kg)	3,330*



\*Note: Tare and ATM weights will vary when adding optional extras. Images are not to scale and are only for illustration purposes.